

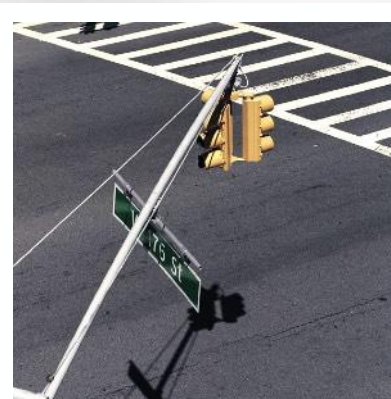
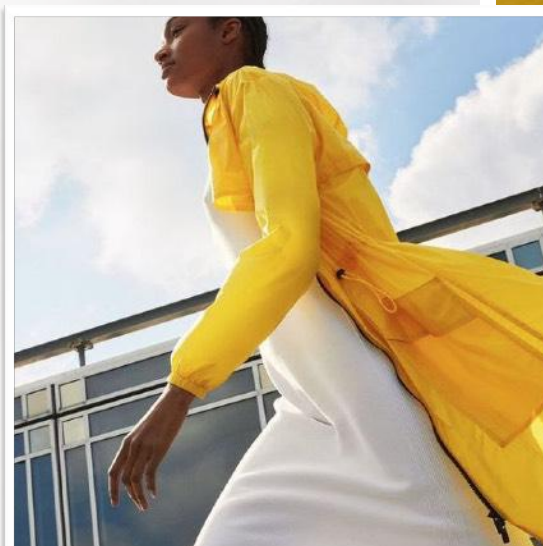
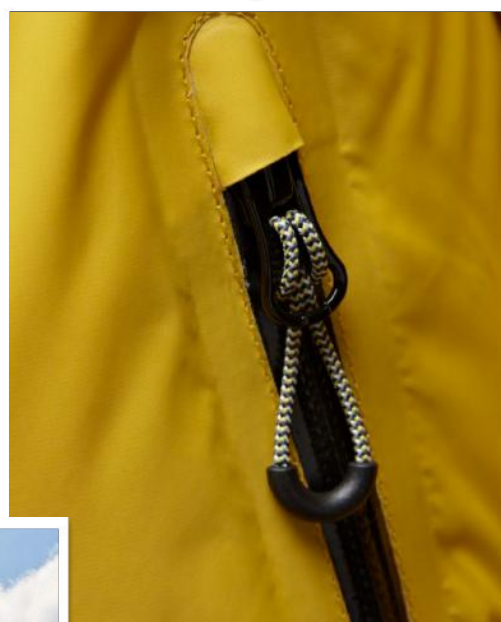


TREND PRESENTATION

SPRING SUMMER 2023



ABOUT RESET



QUALITY OUTERWEAR FOR URBAN CHALLENGES

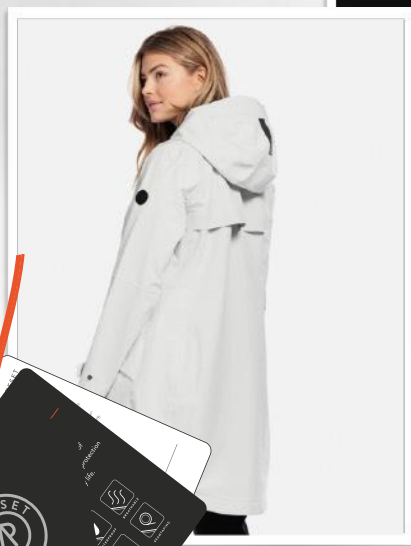
RESET empowers to go outside and explore no matter the weather. It's not about going from A to B, but about moving through the city from A to Z, whatever the conditions. RESET is designed for the urban commuter, to keep them dry and cool, to protect them from the weather as they are on the go.

Ever-changing weather is part of our Dutch heritage and identity. It has been our inspiration since day one. We craft every RESET product carefully and design it with purpose, by keeping the elements and the different urban environments in mind. We make outerwear for cold, wind, rain and sunshine optimized for real life, inspired by the people who wear it.



ABOUT RESET

RAINWEAR



LIGHTWEIGHT



ESSENTIALS



COLLECTIONS

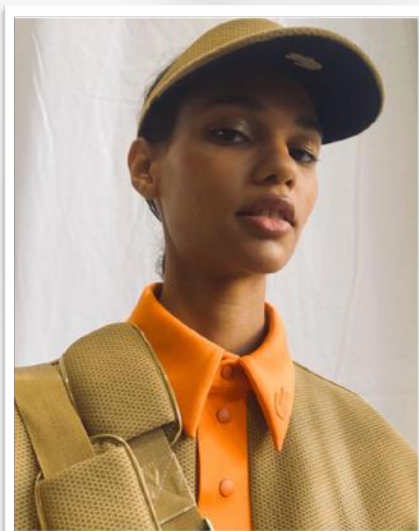
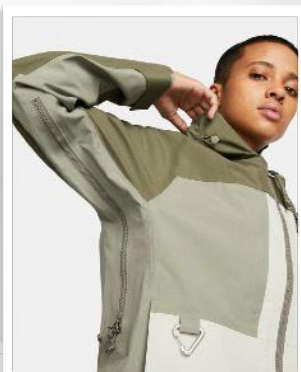
The RESET collection is built on three strong pillars. Reset Rainwear, Essentials and Lightweight collection.

The Rainwear collection consists of styles that provide all-weather protection for urban challenges with cleverly designed elements. The jackets are windproof, waterproof and breathable.

Within the Essentials collection you will find seasonal items that incorporate contemporary fashion influences of the season, but always remaining true to RESET's signature.

RESET lightweight collection is a capsule collection that offers unbeatable warmth, especially for the weight of the jacket itself. Our jackets are filled with high quality down, which is cruelty free obtained and meets the criteria of the Responsible Down Standard (RDS).

We have developed distinctive branding to distinguish between each pillar in the collection, but still offer a whole brand experience.



COLOR CARD

5080 Sailor Blue



3200 Clementine



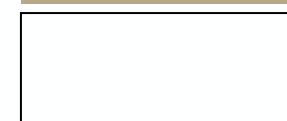
6820 Cosmic Green



7150 Light Sand



8180 Milky White



5810 Ether Blue



6240 Forest Green



COLORS

In the S'231 collection newly introduced earthy greens are combined with vibrant Clementine orange and Ether blue to keep it fresh.



COLOR CARD

1270 Popsicle Lime

7060 Waxed Khaki

4930 Bright Fuchsia

5070 Marine

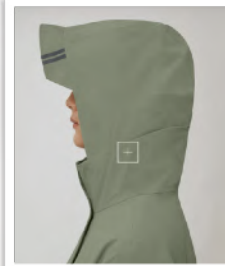
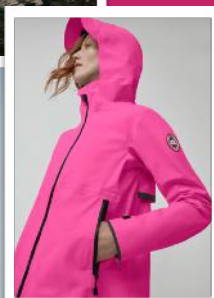
8100 Eggshell

4940 Summer Mauve

5560 Light Denim

COLORS

This season's trend colors are vibrant and rich. Bright fuchsia and Popsicle lime mixed with earthy Summer mauve and Waxed khaki.





COLOR CARD

1260 Post-it Yellow



4955 Candy Pink



8150 Ivory



2210 Tan



6610 Grass Green



5900 Deep Topaz



COLORS

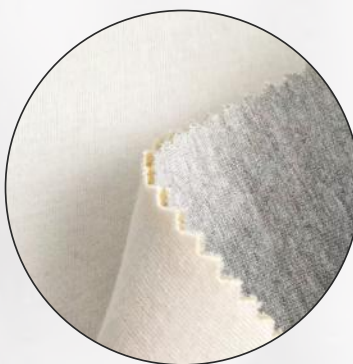
For the one who is longing for fresh new colors after dark winter days, this is the go to color scheme. Grass green, Candy pink and Post-it yellow will brighten up every mood.



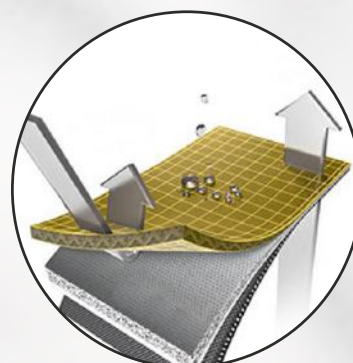
RAINWEAR



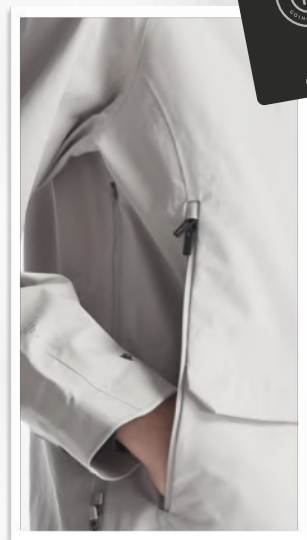
Sealed seams



Jersey backing



2-Layer performance fabric:
waterproof, windproof and
breathable



AGADIR /
LR004.30.231



AMALFI /
LR004.60.231

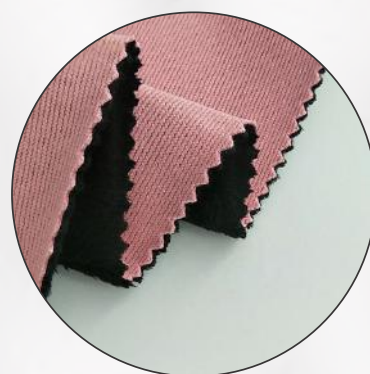
URBAN COMMUTER

Jackets belonging to the urban tech capsule offer weatherproof garments for the modern woman who demands both performance and refinement from her everyday outerwear. These jackets are waterproof, breathable and windproof thanks to a special membrane and seamtaping added to the backside of the fabric.

The jackets have a jersey backing which makes it comfortable to wear during warmer temperatures. We've added black trims which creates high contrasts in the designs.



RAINWEAR



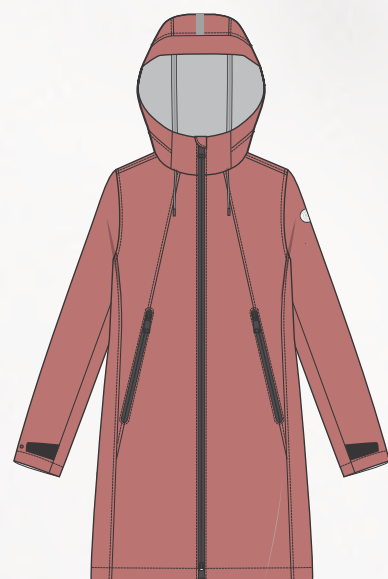
Fleece backing



Rainproof



Water repellent
trims



BALTIMORE /
LR001.60.231



BRUXELLES /
LR001.61.231

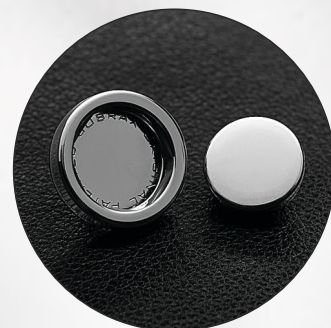
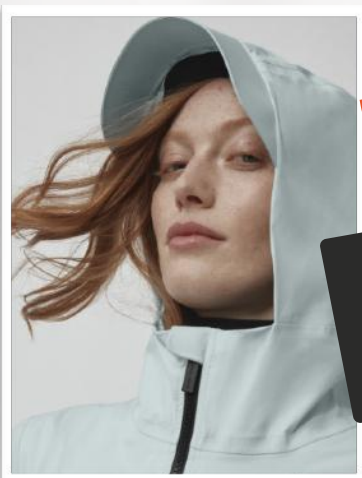
TRANSSEASONAL SOFTSHELL

Women in motion. With RESET's non-padded softshell capsule you're ready for whatever the journey throws your way. The jackets in the LR001 program are waterproof and offer the best weather protection during the change of seasons.

The fleece backing keeps you warm during transseasonal weather conditions. Water repellent trims are added to keep you completely dry during heavy rain.



RAINWEAR



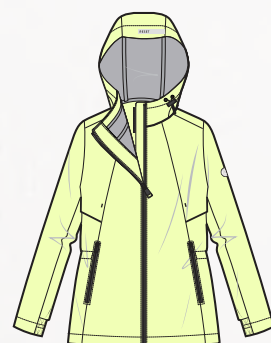
High end trims



Clean finish
elastically cuffs



Perforated
breathable air
holes



CHARLOTTE /
LR002.20.231



COLOMBO /
LR002.60.231



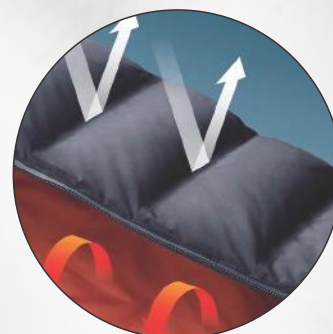
CANCUN /
LR002.61.231

CITY FUNCTION PARKA

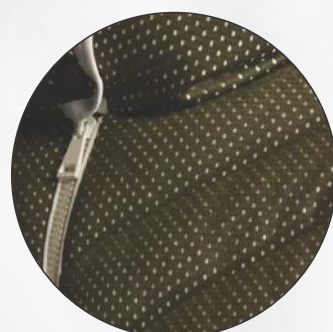
Contemporary city parka's are offered in a cotton blend fabric in fresh new tones such as Ether blue and Popsicle lime. The LR002 fabric has a PU backing, but still feels lightweight. Ideal jackets for active occasions on the go. The styles are designed with a lot of attention to detail such as high end trims and clean finishes that make them sophisticated and modern.



ESSENTIALS



Matte Heatseal fabric



Mesh with PU backing fabric



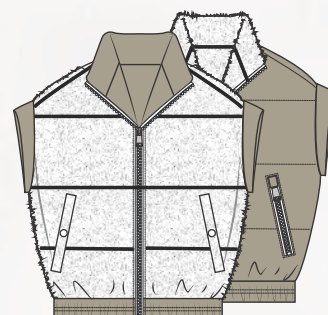
Reversible summer teddy



JEDDAH /
LR010.10.231



LIMERICK /
LR019.10.231



OTARU /
LR020.80.231

FASHION FABRICS

Besides our classical RESET materials we have also added new exciting materials in the new collection.

HEAT SEAL: The LR010 fabric has a matte outlook and a waterproof coating at the backside. Due to the lightweight down filling, it remains light and comfortable to wear. The down chambers are bound with thermal compression instead of stitching, to achieve water-repellent functionality.

MESH: We have a quilted style in a Mesh with PU backing fabric that gives a sporty and contemporary outlook. This is combined with white trims to freshen up the style.

SUMMER TEDDY: We've added fun, multifunctional styles in teddy fabric that are reversible. The material keeps you warm during colder moments, which makes them ideal transseasonal items.



ESSENTIALS



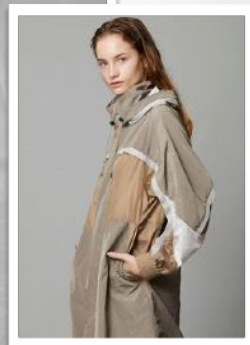
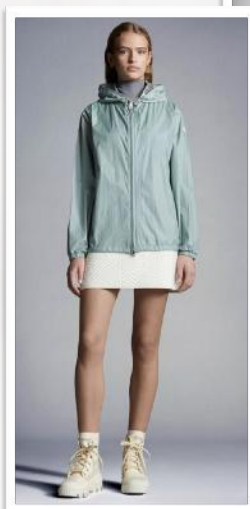
Gathering at seams



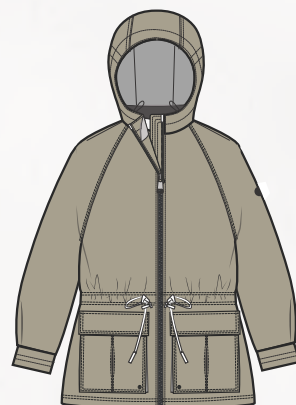
Mesh cord trims



Elasticated cuffs



PORTOFINO /
LR016.10.231



RIO DE JANEIRO /
LR016.20.231



ROSKILDE /
LR016.60.231

CRINKLED NYLON

For the warmer days we have designed several items that are made in a light, crispy, crinkled nylon. The styles are comfortable to wear, have strong design features such as gathering at the seams, specially developed mesh cord trims and elasticated cuffs that bring a sporty look. This material works best in vibrant colors such as Bright fuchsia and Popsicle lime, but also earthy tones such as Waxed khaki.



ESSENTIALS



PROTECTION IN STYLE

Quilted outerwear is still happening for the Summer season to come. In the RESET collection you will find diamond quilted jackets such as the Montreux and Muscat in modern shapes and cool color tones.



MONTREUX /
LR011.11.231

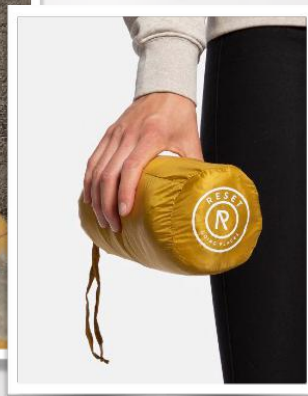
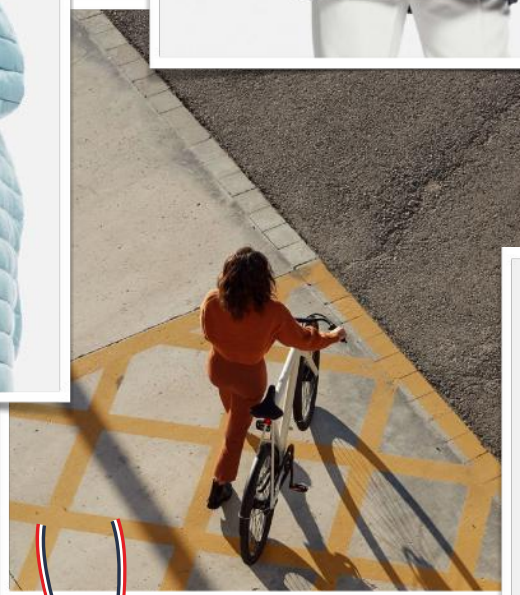


MUSCAT /
LR011.20.231

GENUA /
LR027.11.231



KYOTO /
LR027.32.231



PARIS /
LR027.10.231



BARCELONA /
LR027.19.231

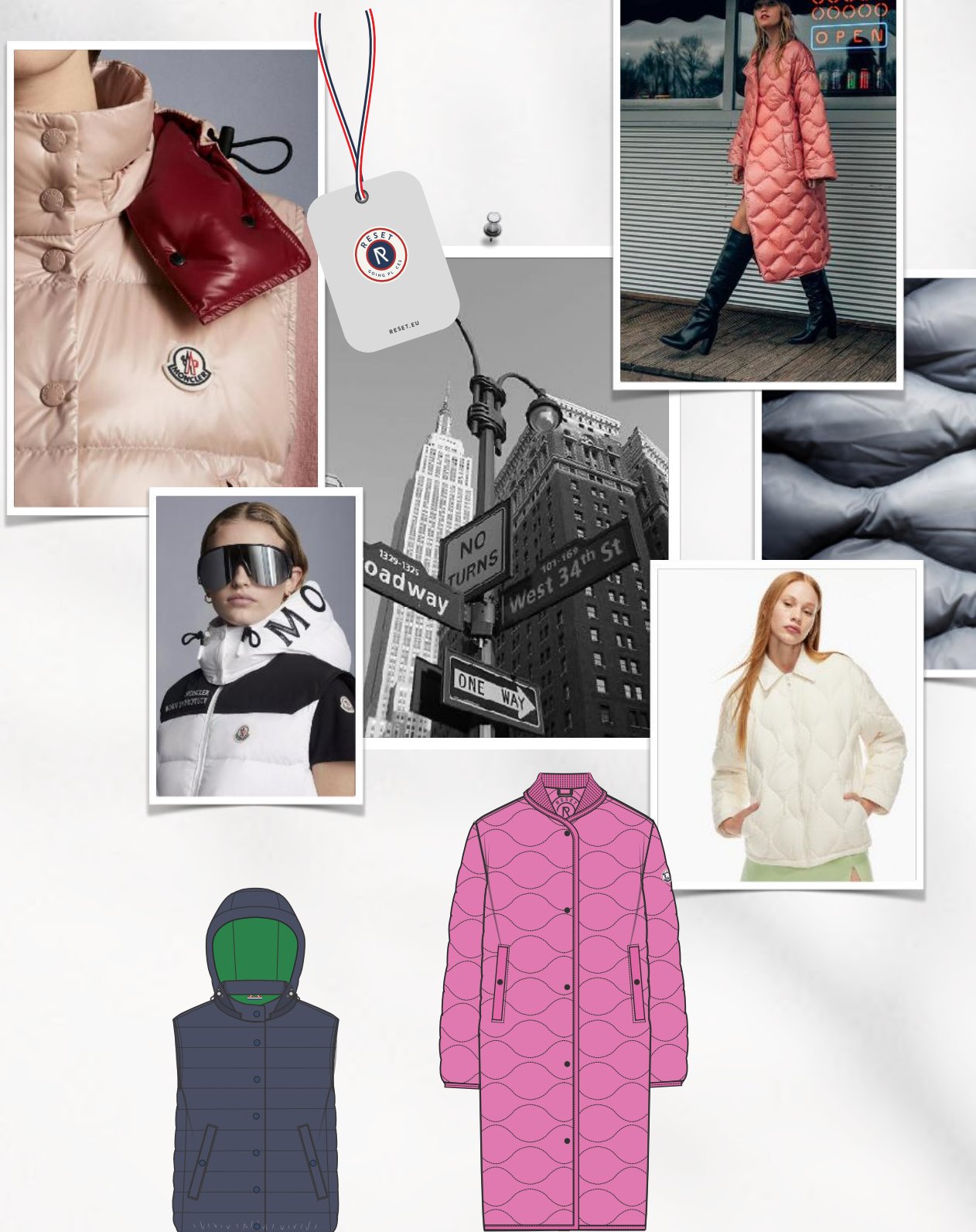


LIGHTWEIGHT ICONS

RESET is well known because of the lightweight packable collection. These jackets can be recognised by the red, white and blue signature branding. The styles are designed to the highest quality and offer an extra layer of warmth during cooler temperatures.

Our Never-out-of-Style articles; Paris, Kyoto, Barcelona and Genua are transseasonal pieces that can be worn alone or can be used as layering piece. These jackets can be easily packed away, ready to take you everywhere.

The jackets are filled with high quality down, providing you optimal comfort and warmth. Our down filling is cruelty free and meets the criteria of the Responsible Down Standard (RDS). For more info visit responsibledown.org.



IBIZA /
LR027.81.231

BRASILIA /
LR027.60.231

NEW IN LIGHTWEIGHT

This Summer we will introduce to you new shapes, quilting and colors in the Lightweight collection. For example onion quilting in a longer style for the colder months at the beginning of the year or a boxy shaped bodywarmer in color mixes. The styles are fun, easy to wear and come in bright new colors to freshen up every outfit.



THANK YOU
ENJOY THE NEW COLLECTION